



# **Moonshine in a Healthcare Environment**

*Lessons from the Trenches*

**Jennifer Phillips/Valerie Marquardt**

Kaizen Promotion Office  
**Virginia Mason Medical Center**





# Objectives

- Define purpose and intent of moonshine
- Recognize opportunities for moonshine application within your organization
- Apply high-level steps of the moonshine process to a project





# Moonshine Defined

Prototyping when a supply or piece of equipment doesn't exist that meets our unique needs or is not cost effective

- Fast and inexpensive
- Uses available materials
- Involves 'try-storming'
- Requires creative, unstructured environment



# Key Concepts

- Try it before you buy it
- The learning is in the doing
- No money spent = creativity at a new level
- “Building to think” (IDEO)





# The Problems We Faced...

- Staff ideas would get stuck
- Work arounds
- \$\$\$





# How We Evolved Into Moonshine

**Exposure through manufacturing field trips**

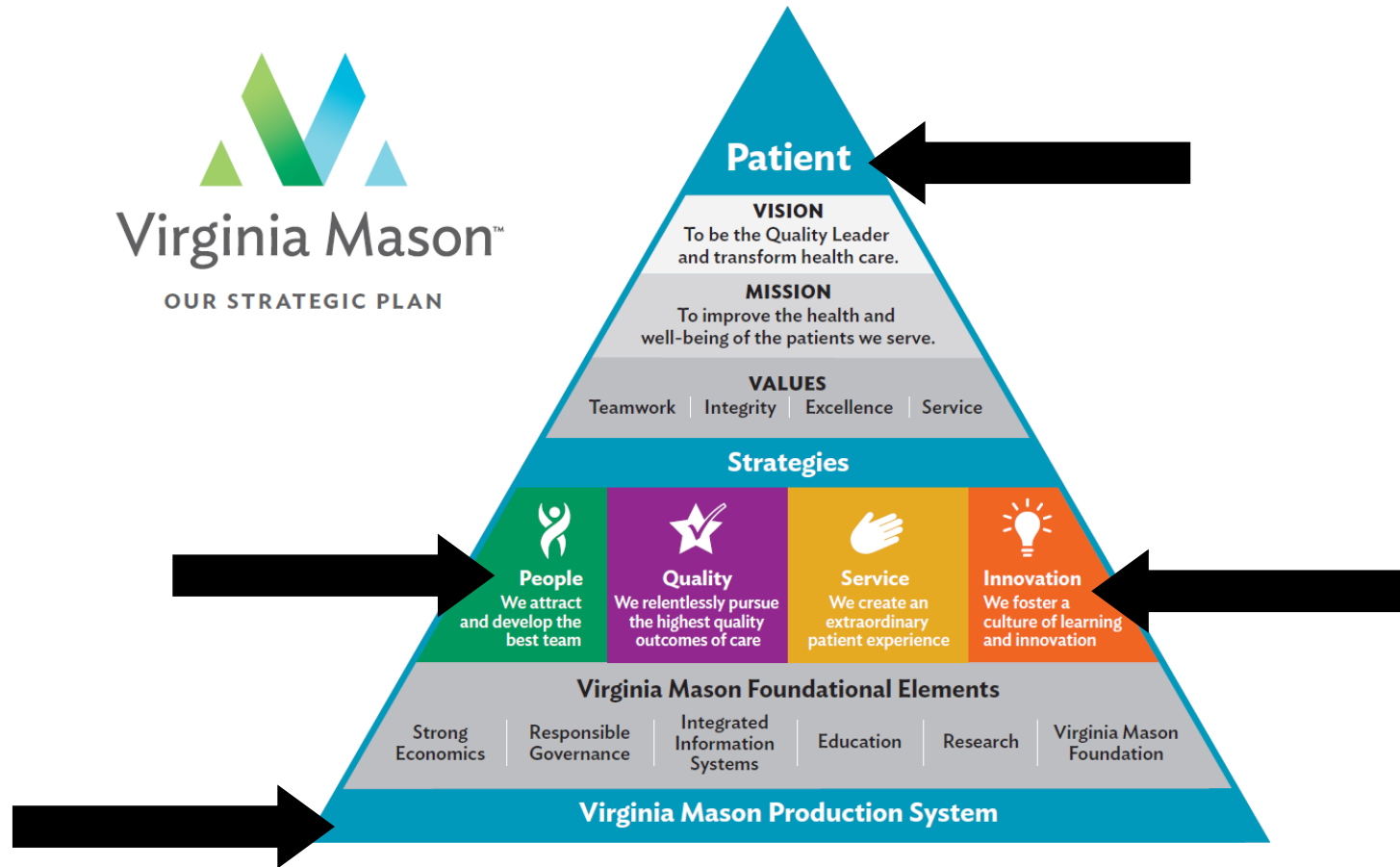
**Studying/adopting lean practice**

**Deliberate focus on innovation R&D/prototyping**





# How It Fits Strategically







# We Rely on Staff and Customer Creativity



- Skills & knowledge extend beyond day jobs
- Involve staff, patients, families, board members, business partners—the sky's the limit



# Benefits to Healthcare

- Helps with resource constraints, cost containment
- Can fix burdensome or unsafe work arounds
- Forces understanding of critical function(s)
- Means for the actual user to create ideal product
- Can help improve patient safety and flow

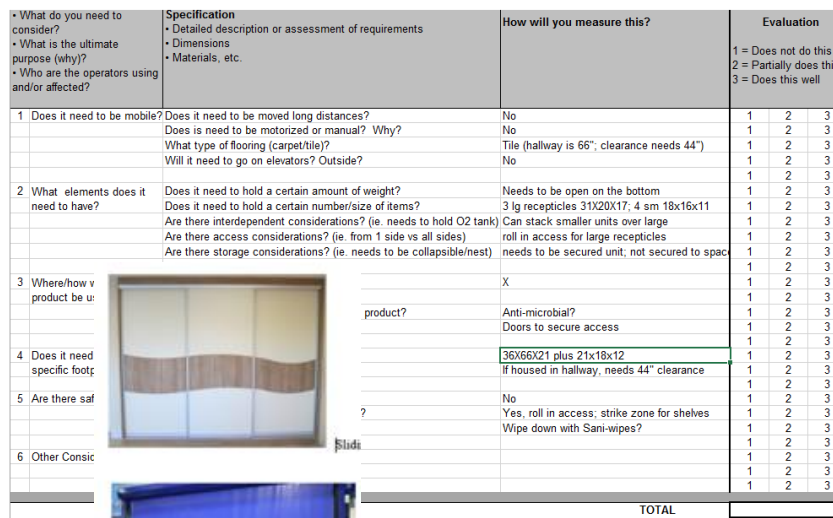


# Examples













# How About Back at Home?

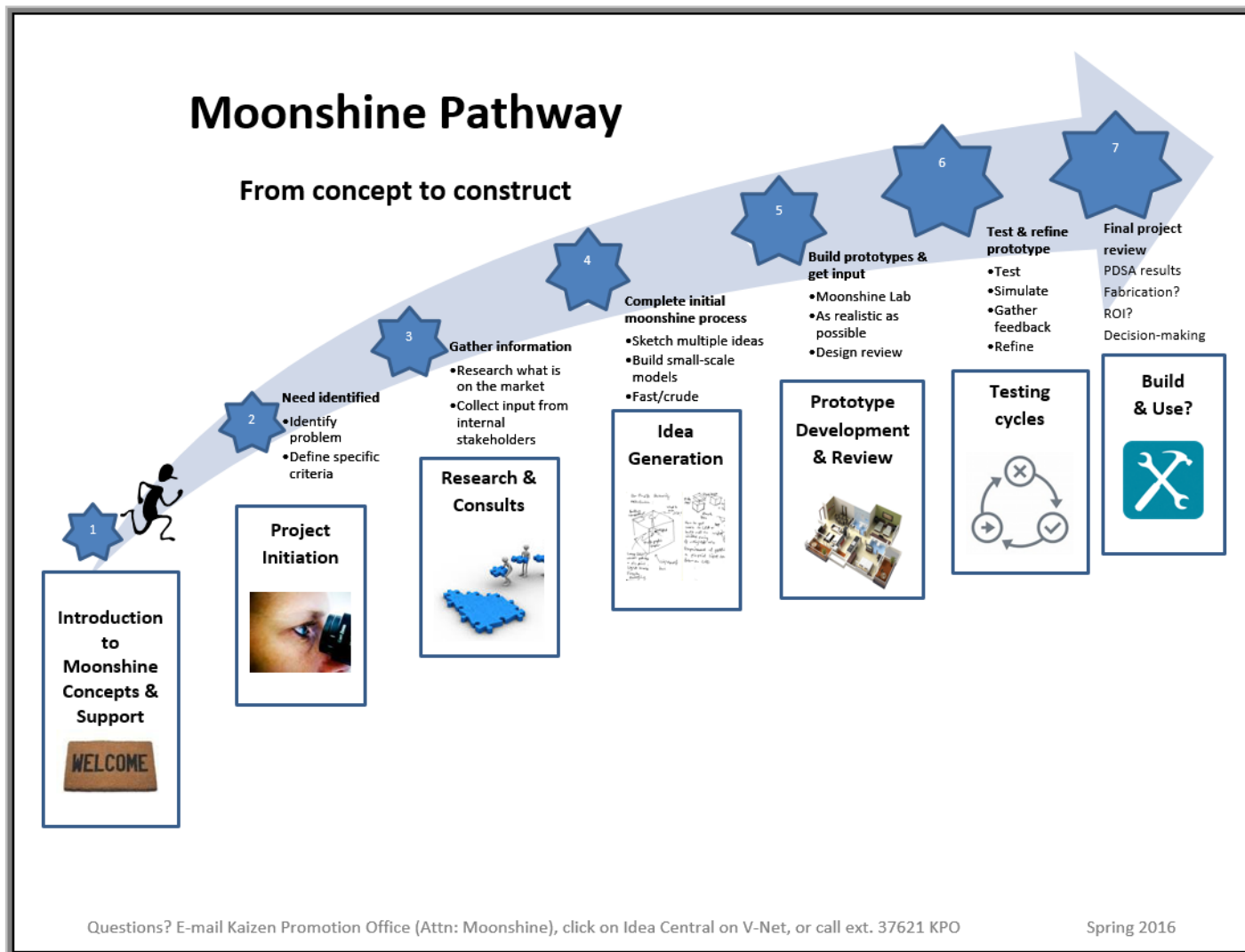


- Any current moonshine examples?
- Possible issues that could be solved by moonshine?
- Who are your MacGyvers?







# Steps of Moonshine



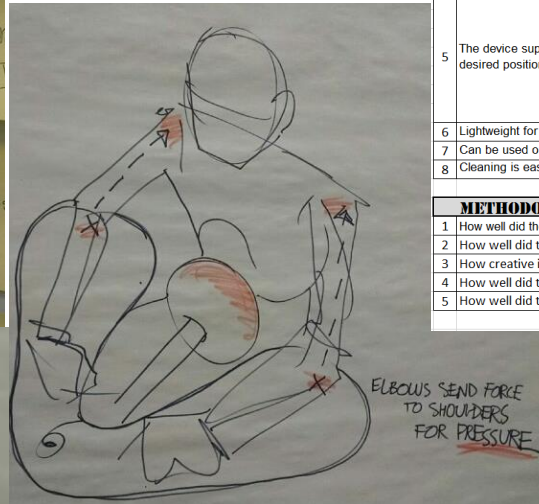
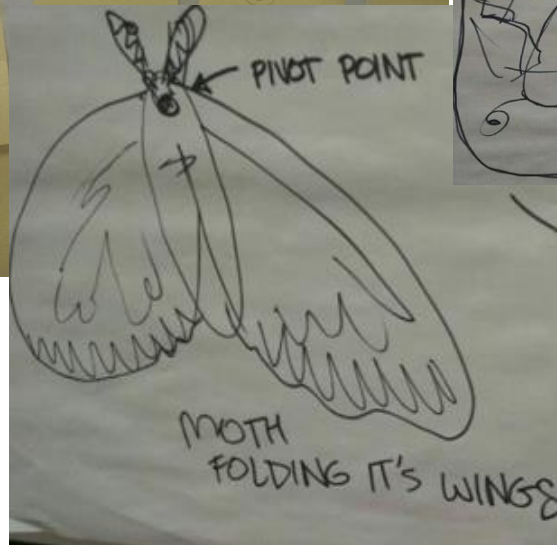
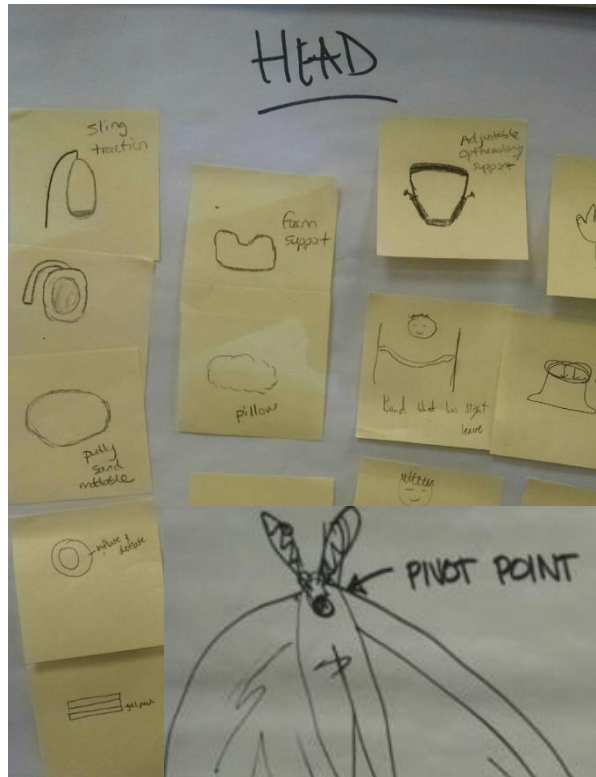


# Is Moonshine the Right Thing?

- Do you understand the impact of the product (or lack of) on operators and flow 
- Do you need a product that does not exist in the marketplace? 
- Does a product exist but it does not meet your unique needs?
- Is it cost effective to buy it?
- Do you need test an idea before you purchase?



# Step 4



EVALUATION - HOW WELL DOES EACH PROTOTYPE MEET THE SPECIFICATIONS?		1 = Does not do this	2 = Partially does this	3 = Does this well
FUNCTIONAL SPECIFICATIONS		Score for Model #1	Score for Model #2	Score for Model #3
1	Device is stable independently			
2	Device is easily adjustable and supportive of all body types (ht, wt, girth)			
3	Line management			
4	Space requirements			
5	The device supports the patient in the desired position			
6	Lightweight for mobility			
7	Can be used on any bed or stretcher			
8	Cleaning is easy			
Total Score				
METHODOLOGY				
1	How well did they use the 11 steps of moonshine/3P process to tell their story (see attached)?			
2	How well did they rise to the level of change requested?			
3	How creative is the prototype compared to current state?			
4	How well did they use available resources to meet the functional specifications?			
5	How well did the prototype meet the functional specifications?			
Total Score				





# Step

5

## Seahawks Team



### Team Seahawks Roster

Captain: Debbie Cutchin  
Adam Lefebvre  
Jacqui Owen  
Michael Kimball  
Lisa Lingenbrink  
Karen Carter (Evergreen)



## Mariners Team



### Mariner's Roster

Captain: Val Marquardt  
Michelle Reesh (Evergreen)  
Chris Page  
Matt Liedtke  
Erik Borgesen



## Sounders Team



### Team Sounders Roster

Captain: Joleen Bishop  
Marla Brown  
Carly Magnusson  
Lou Lund  
Susan Downey



© 2014 Virginia Mason Medical Center

© 2014 Virginia Mason Medical Center





# Step





## Moonshine Design Review #2 Agenda (typically up to 30')

**Goal:** Decide whether to proceed with constructing a testable prototype

**Required materials:** Moonshine pathway, project blueprint, vendor resource directory

**Required participants:**

- ☐ Project initiator
- ☐ Representative/sponsoring leadership
- ☐ Moonshine facilitator
- ☐ Other roles identified as crucial at this stage (e.g., *Infection Control, Risk Management, Corporate Compliance, Patient Safety, Design & Construction, Information Systems, Intellectual Property Ventures*)

**Agenda**

- ☐ Introductions/roles
- ☐ Moonshine pathway
- ☐ Review project results to date and supportive documentation
- ☐ Review implications influencing next steps
  - Unresolved issues, challenges, concerns
  - Regulatory impacts/IRB concerns
  - Financial analysis
- ☐ Decide whether project will proceed
  - Does the current solution still seem promising to solve the problem?
  - Does this still fit within current priorities or is the issue still urgent?
  - Is there sufficient bandwidth of crucial participants to participate, or when would be better timing?
  - Did the team and stakeholders raise concerns that need addressing first, or would suggest not proceeding?
  - Cost impacts, including whether we will need to purchase expertise to ensure a structurally sound prototype for testing? (e.g., device needs to be weight bearing, attach to equipment, etc.)
- ☐ Next steps:
  - If proceeding, what are the details (what who, when, additional resources needed)
  - If not proceeding, agree on communication and recognition process and whether to initiate alternative kaizen work

# Step



7





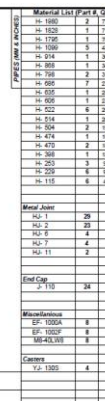
➤ Identify core functions



- Connect with nature



- Not all projects are created equal





# Struggles

- Project diversity
- System complexities
- Regulatory requirements
- Technical expertise
- Inertia
- Prioritizing



# Key Messages

- Anyone can do it; just jump in and get your hands dirty
- Recognize and celebrate your team's ideas and efforts
- The faster you try, the faster you learn
- Deny expensive materials to begin with



# Purpose-Driven Excellence

- Build organizational commitment to a lean journey
  - Both process improvement and product improvement
- Incorporate intentional focus on innovation as part of that lean journey
  - Support team members in being creative and tackling problems/issues in daily work



# Discussion



# Thank You!

**Your opinion is important to us!**

Please take a moment to complete the survey using the conference mobile app.

**Session: WP/21**

**Presentation Title** Moonshine in a Healthcare Environment

**Your name** Jennifer Phillips, Valerie Marquardt

**Company name** Virginia Mason Medical Center

**email address** [jennifer.phillips@virginiamason.org](mailto:jennifer.phillips@virginiamason.org),  
[valerie.marquardt@virginiamason.org](mailto:valerie.marquardt@virginiamason.org)